

# Linea de Compresores a Tornillos

# FRIMONT

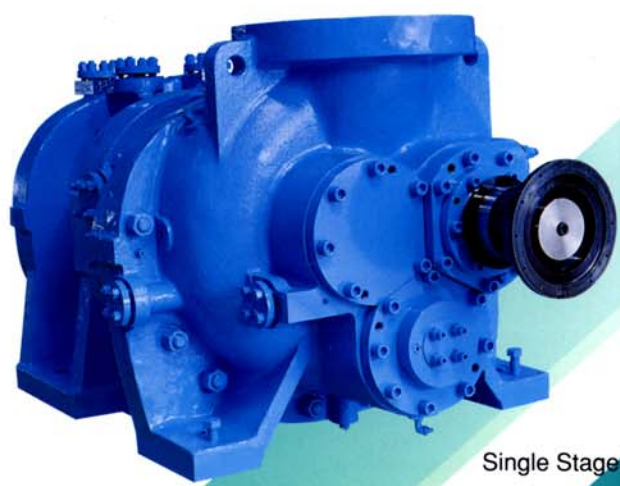
Equipos y Sistemas Frigoríficos

# Pride of KOBELCO

## EH SERIES - 60barG / 870psiG

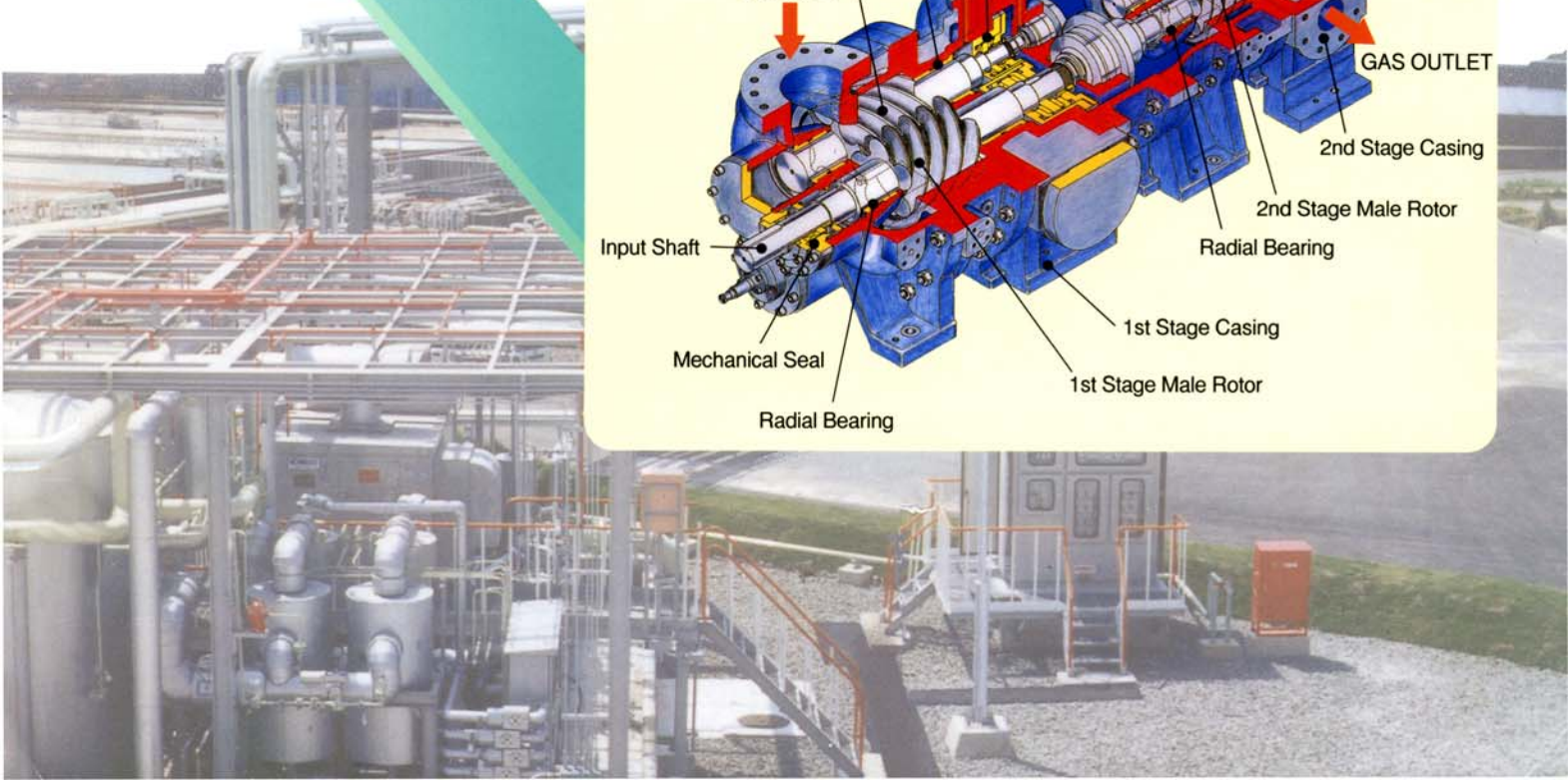
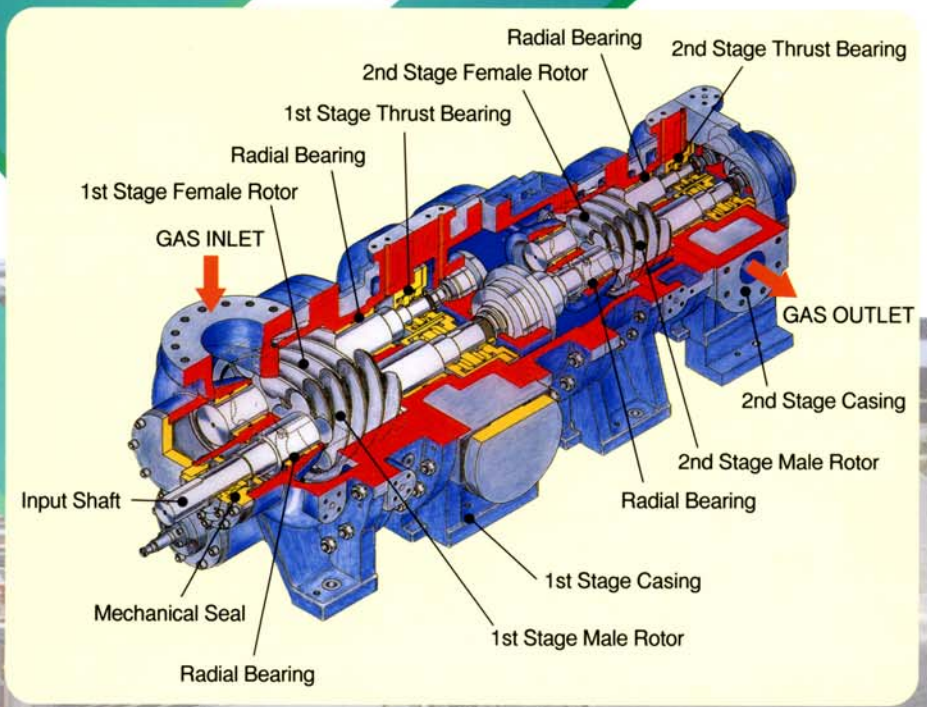
Very High-pressure(60barG/870psiG)series  
 API Standard  
 Major application:  
 Gas turbine fuel gas boosters  
 Refinery Services compressors  
 Petrochemical Service compressors.

(Discharge pressure more than 60barG  
 is available per pressure ratio.)



Single Stage Model

Two-Stage Tandem Model

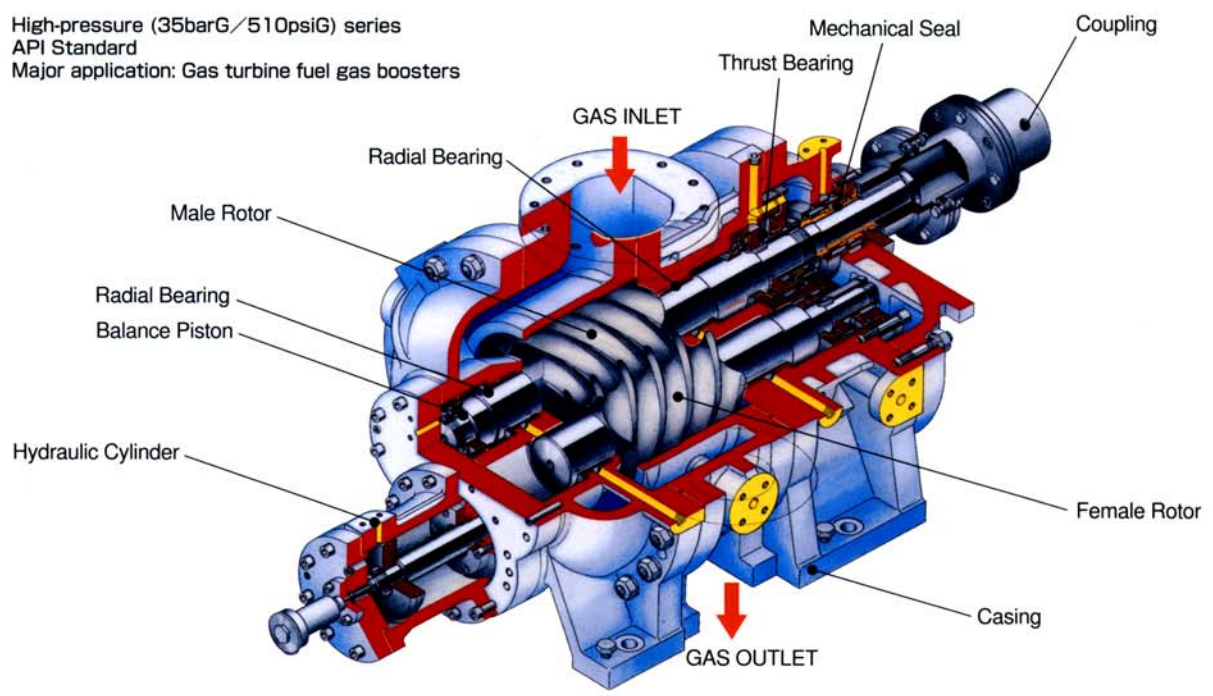


# WIDE LINEUP

## H series

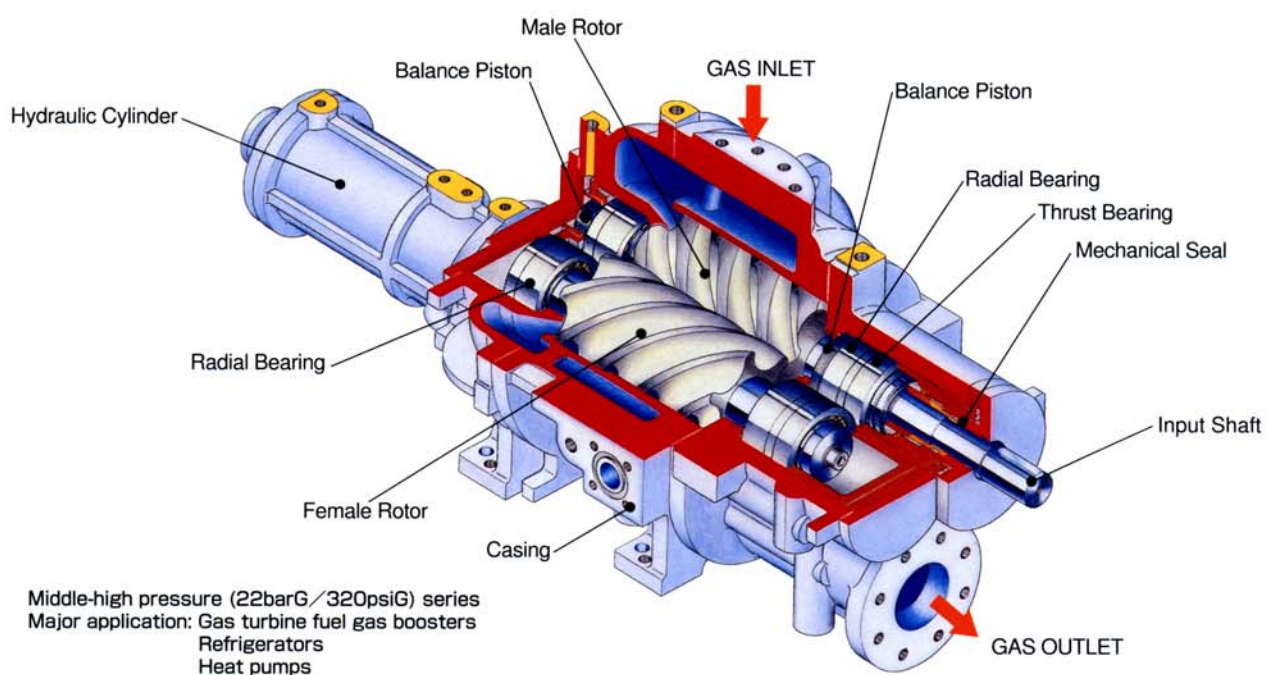
H series high-pressure compressors can provide a maximum discharge pressure of 35barG/510psiG. The compressors in this series meet API Standard 619.

High-pressure (35barG/510psiG) series  
API Standard  
Major application: Gas turbine fuel gas boosters



## NB series

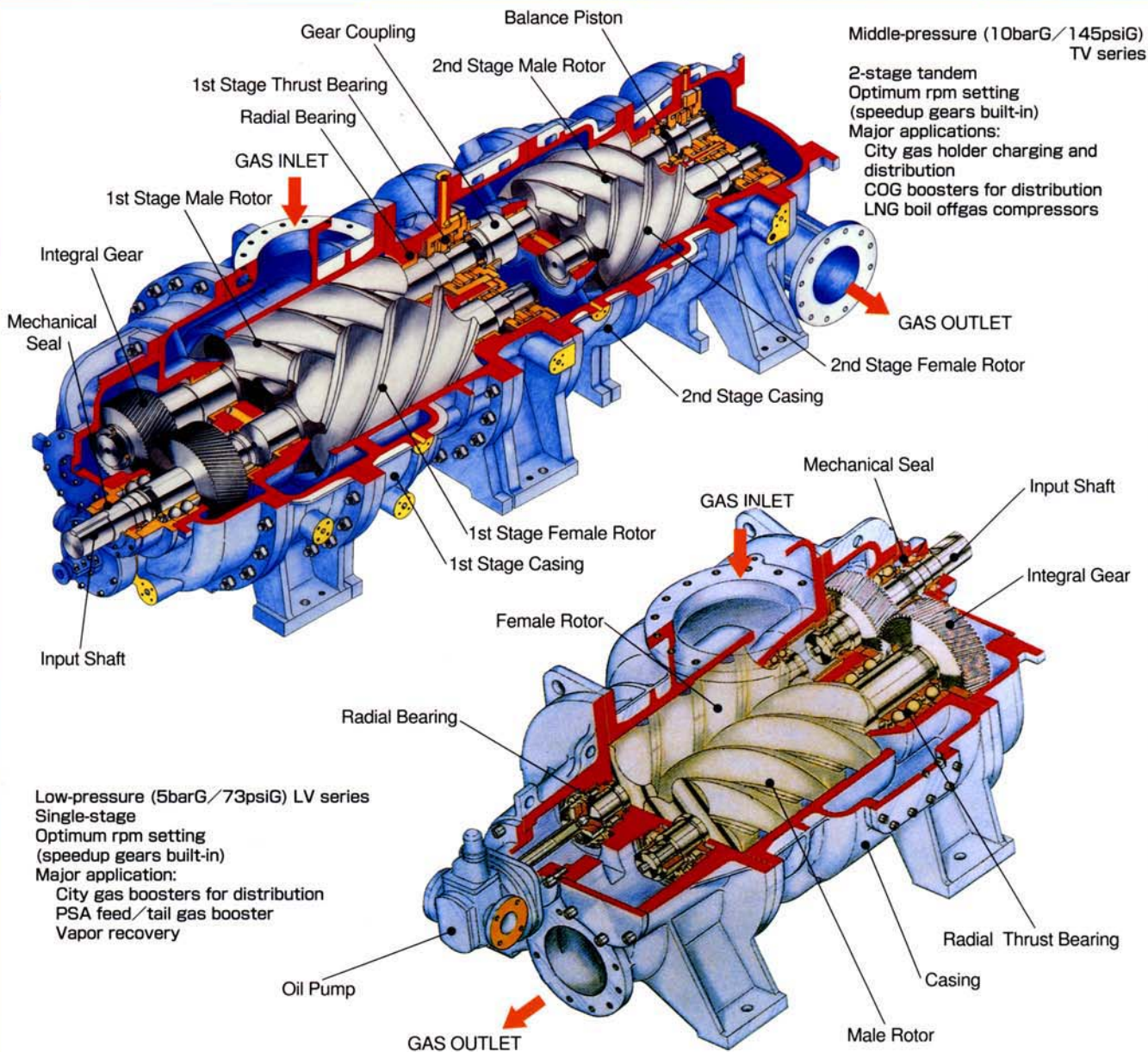
NB series compressors use anti-friction bearings for both radial and thrust.



Middle-high pressure (22barG/320psiG) series  
Major application: Gas turbine fuel gas boosters  
Refrigerators  
Heat pumps  
Oil and gas gathering compressors  
LNG boil off gas compressors

# TV/LV Series

TV series (2-stage tandem) and LV series (single-stage) compressors are equipped with speedup gears. Users can select the most appropriate compressor to match their capacity needs. TV series compressors provide much higher power efficiency than the single-stage compressors of the LV series. In addition, no piping is required between the first and second stages.



## Range Chart

